

**3**

<sup>1</sup>H, 400 MHz, CDCl<sub>3</sub>  
with 1,3,5-trimethoxybenzene

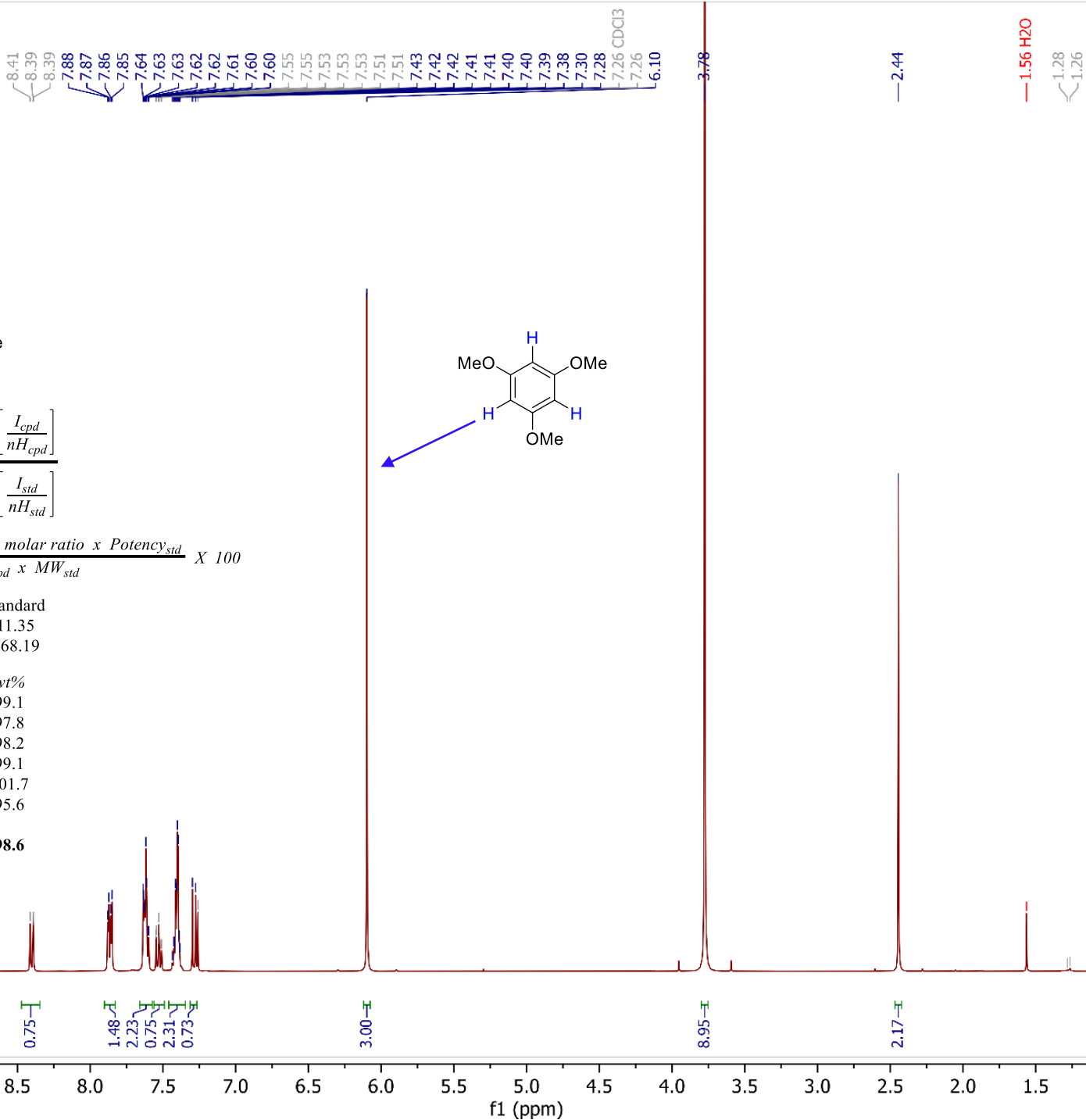
$$\text{Molar ratio} = \frac{\left[ \frac{I_{cpd}}{nH_{cpd}} \right]}{\left[ \frac{I_{std}}{nH_{std}} \right]}$$

$$\text{wt}\% = \frac{mg_{std} \times MW_{cpd} \times \text{molar ratio} \times \text{Potency}_{std}}{mg_{cpd} \times MW_{std}} \times 100$$

	product	standard
sample mass	14.48	11.35
mw	286.33	168.19

peak	I <sub>cpd</sub>	molar ratio	wt%
8.40	0.75	0.75	99.1
7.86	1.48	0.74	97.8
7.61	2.23	0.743	98.2
7.53	0.75	0.75	99.1
7.41	2.31	0.77	101.7
2.44	2.17	0.723	95.6

**Average = 0.746 98.6**



10.0 9.5 9.0 8.5 8.0 7.5 7.0 6.5 6.0 5.5 5.0 4.5 4.0 3.5 3.0 2.5 2.0 1.5 1.0 0.5 0.0

f1 (ppm)